

### From NY, NJ & Environs

Take Major Deegan Expressway (87) to NY Thruway (still 87), which becomes the Northway just past Albany. Exit at Rt. 149, north of Glens Fall. Take 149 to Rt. 4 at Whitehall. Continue on 4 to Rt. 7 North in Rutland, Vt. and continue as above.

### From NY, Connecticut, Western Massachusetts

Take Rt. 95 (Conn. Turnpike) to 91 at Hartford. North on 91 through Massachusetts into Vt. Exit at Rockingham (Rt. 103). Stay on 103 to Rt. 7, just south of Rutland. Continue north on 7 to 53 as above.

### From Boston

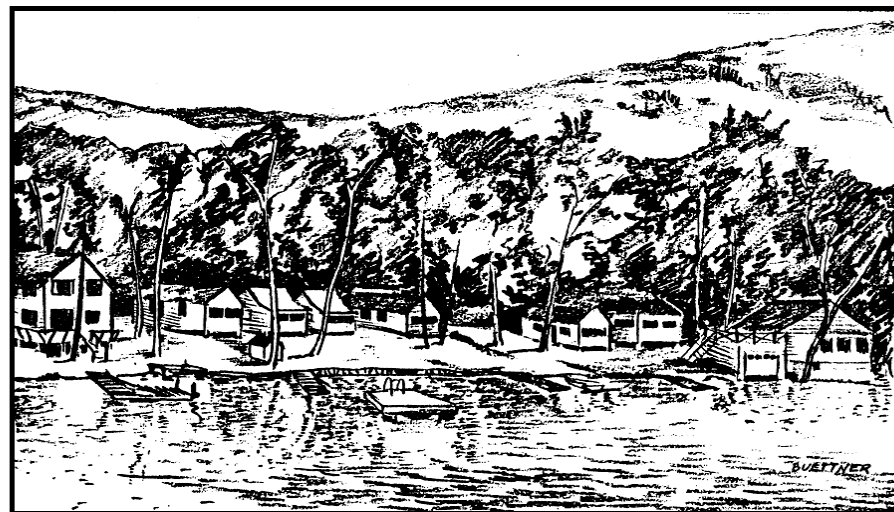
Rt. 93 to Rt. 89 at Concord, NH. Exit at second exit in Vt, Exit 1 ("Rutland, Woodstock, Rt. 4"). Left on Rt. 4 to Rutland (42 miles). Right on 7 North in Rutland. Continue on Rt. 7 to 53 as above.

### From Canada

Take Rt. 89 south to Burlington. Exit to Rt. 7 South. Continue about 43 miles to junction with Rt. 53 (about 7 miles past Middlebury). Turn left on 53 and continue as above.

## North Cove Cottages

*on Lake Dunmore*



Located ten miles south of Middlebury in central Vermont, Lake Dunmore is one of New England's most beautiful lakes.

Our 11 housekeeping cottages are on a large cove, protected from the rough water of the main lake. Our spacious lakefront gets the sun from well before noon to sunset. The cottages range in size from three to seven rooms; the largest ones sleep five and are winterized. They have modern kitchens and bathrooms, comfortable furnishings, and broad windows overlooking the lake. Heating varies from electric baseboard and portable heaters in the smallest cottages to thermostatically controlled gas heaters and woodburning stoves in the largest.

Our grounds are spacious and level, with a tree-shaded lawn. Each cottage has its own picnic table and grill; the campfire pit is used for evening get-togethers and everyone shares the ping pong table, hammocks, and swingsets. Guests are free to pick herbs and cherry tomatoes from the container gardens that dot the property.

1958 Lake Dunmore Rd. \* Salisbury, VT 05769

802/352-4236

617/787-8130 (winter)



Our swimming area has been sanded and the bottom is gradual with no sudden drop-offs. A small inlet next to a sandpile provides a nice play area for toddlers, while older children can easily swim to our raft. Guests may use any of our rowboats and water toys free of charge, or rent our small motorboats, canoe, kayaks, Sunfish, paddleboat, and rowing shell by the hour or day.

Shopping is convenient. A general store and laundromat are within a half mile. Middlebury has supermarkets open 24 hours a day, drugstores, restaurants, a cinema, and libraries. Both Middlebury and Brandon have golf courses. Public tennis courts are located at the college and in E. Middlebury. Middlebury College and its Bread Loaf mountain campus offer a full range of cultural activities, and a visit to the state crafts center in Frog Hollow is mandatory.

Explore antique shops and studios, visit the famed Shelburne Museum, ride the Sugarbush Express to Burlington, cycle the back roads, fish the trout streams. This is a wonderful area for swimming, boating, fishing, bicycling, horseback riding, dining out, birdwatching, and auctions. Mt. Moosalamoo, which flanks the eastern shore of the lake, has many challenging trails that start half a mile down the road. Or drive 20 minutes to the Long Trail at Middlebury or Brandon Gaps.



We're open year-round. During the summer months, we rent only by the week. Off-season, we can be more flexible. Our four winterized 2-bedroom cottages are also available for the school year or for ski season. One may be open for shorter winter rentals. We're 20 minutes to the Middlebury College Snow Bowl, an uncrowded, uncommercialized family ski area, and close to Blueberry Hill and other cross country trails. We're an hour from Killington, Sugarbush, Mad River, and the Burlington airport.

North Cove Cottages has been operated by the Rockow family since 1959. Our guests come from all over the country, lured by the beauty of the area and the congeniality of our community. Most stay for several weeks at a time, and each summer, we host a number of summer school families for the 7-week session. Many of our guests summered at the lake as children and return each year with their own growing families.

Ours is a community with a scholarly bent. Many of us are teachers and professionals who regard Lake Dunmore as our second home. We join the Middlebury Natural Food Co-op and the library, hike with the local Green Mt. Club, and take crafts courses at Frog Hollow.

Our cottages are fully equipped (including jigsaw puzzles and paperback mysteries), except for linens (which we can provide). For your convenience, we rent Porta-cribs, high chairs, mountain bikes, and personal flotation devices. Guests may arrange to install telephones. Television reception is

generally poor because of the mountains, but many people get adequate results from their portables. We have a tv/vcr that we rent, with free videos and the four winterized cottages have satellite tv. If you are bringing a computer, we urge you to invest in a surge suppressor.

We're easy to reach, just two miles off Rt. 7. Openings are limited, so we advise you to contact us early and give a choice of dates. For a reservation, we require a 50% deposit. Unfortunately, we are not wheelchair accessible.

## How to Contact Us



I'm deaf, so the best ways to reach us are by fax and email. You can also call your state relay by dialing 711 or the 800 # (check the front pages of your local phone book) and have the operator dial my TTY number; it will take a message if I'm not home.

Email: [KRockow@compuserve.com](mailto:KRockow@compuserve.com)

Winter: 617/787-8162 (TTY)

617/787-8167 (fax)

617/787-8130 (tel)

Summer: 802/352-4236 (tel)

802/352-4678 (fax)

802/352-9064 (TTY)

## Directions



### From Rutland, Vt.

Go north on Rt. 7 about 23 miles. Ignore the earlier signs for Lake Dunmore and wait for Rt. 53. Turn right on Rt. 53. We are on this road, exactly 2 miles from Rt. 7. At the top of the hill past the Salisbury Fish Hatchery, **bear left on 53.** (Be careful; if you go straight at this point, you'll land on the west shore of the lake.) We're ¾ of a mile from here, ½ mile past the general store on the left. Follow the winding road (slowly; the sheriff is often lying in wait) and stop at the 2-story red house on the right, just before our sign and mailbox (#1958).